

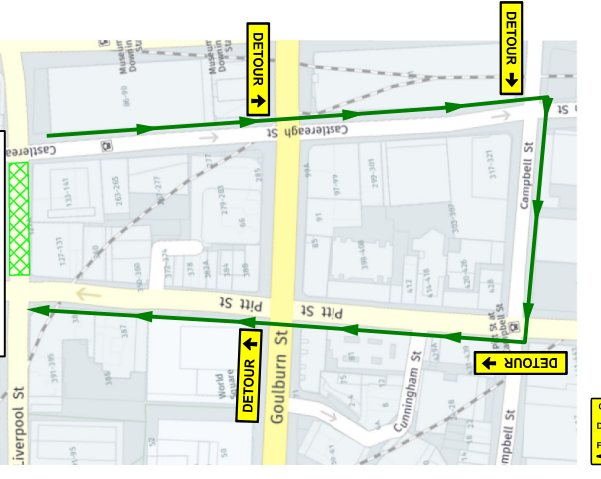


Authorised Traffic Controllers will provide a Road closure situation to maintain traffic and a footpath closure to ensure the safety of pedestrians.

Traffic & Pedestrians will be stopped to assist trucks to reverse up to the mobile crane.

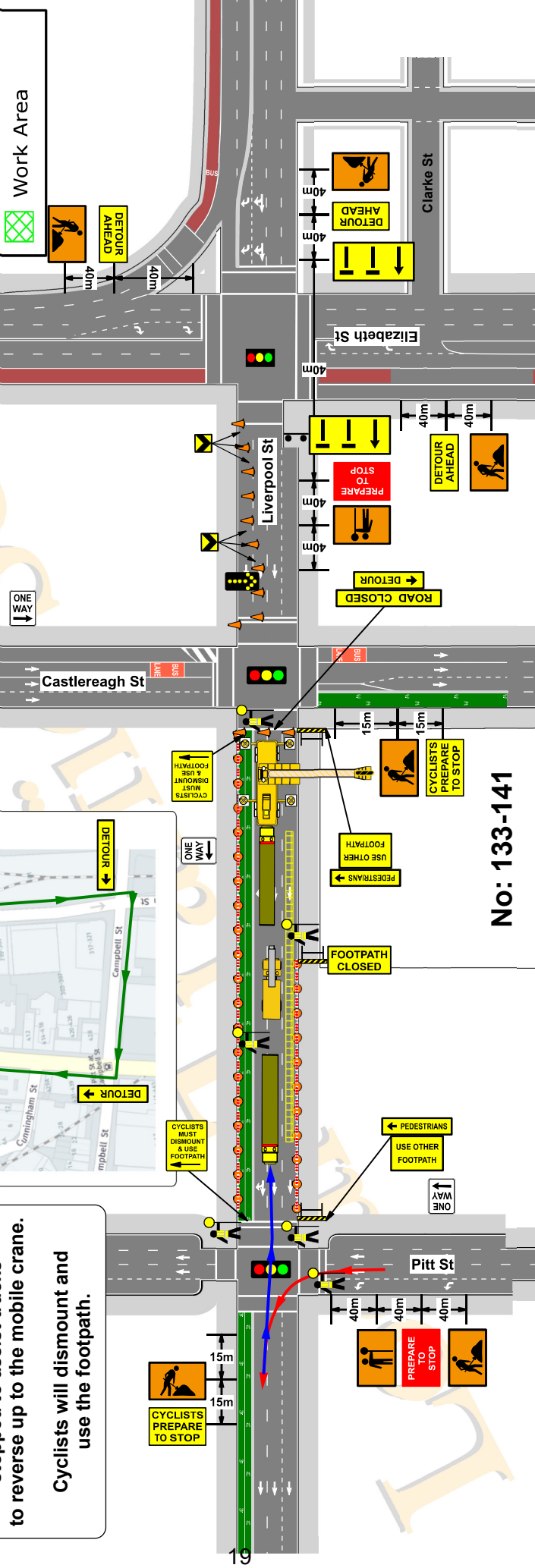
Cyclists will dismount and use the footpath.

**Detour Route**



**Legend**

	Mobile Crane
	Semi-Trailer
	Reversing Route
	Assembly Area
	Traffic Controller
	Franna
	Work Area



**No: 133-141**

<b>Local Traffic Services</b> Plan Drawn By Danny Betts 0402 746 408 9603 8886	Client <b>H&amp;R HASSARATI</b>	Date 06/09/23	Plan No: 5012	Speed of traffic Km/h 45 46-55 56-65 66-75 76-85 86-105 Greater 105	Traffic controller at beginning of taper 15 15 30 N/A N/A N/A N/A	Lateral Shift Taper 0 15 30 70 90 100 110	Merge Taper 15 30 60 115 130 145 160 180	
	Location Of Work 133 Liverpool St SYDNEY	UBD REF 236 D13	Type Of Closure Road Closure	On Site Contact John Saad 0437 510 717				

